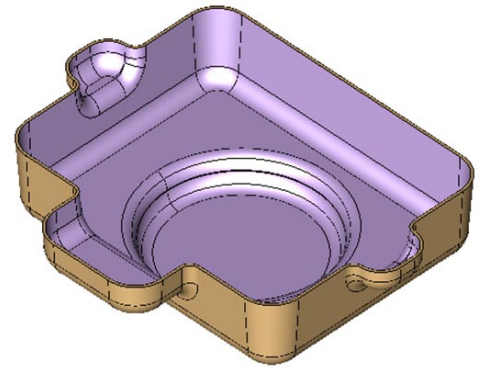


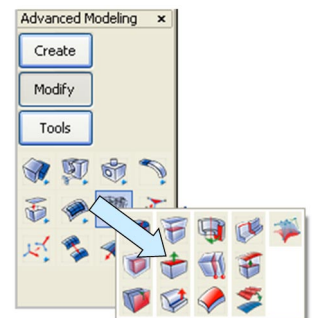
### I Didn't Know You Could Do This in KeyCreator - Fact #3

You can quickly modify the shell thickness of any plastic part sans internal features with a quick mouse click.

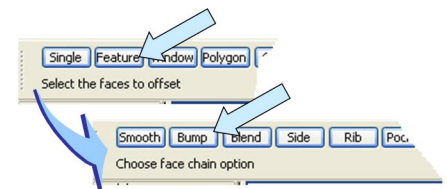


- 1 Simply click on the OFFSET FACE Icon.

To thicken the part, type a positive number for the additional thickness. To make a part thinner, type a negative number.

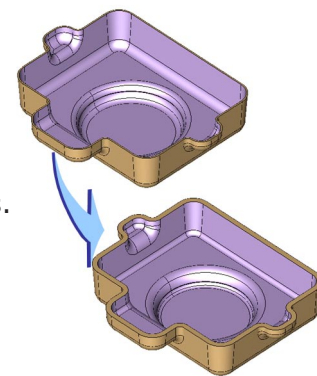


- 2 Click on the Feature Option on the Conversation Bar and then on the Bump Option. (For continuously smooth cores you could also use the Smooth Option.)



- 3 Then, hit the ENTER Key three times.

You now have a part with a new uniform thickness.



Learn more about KeyCreator at [docwaltuniversity.com](http://docwaltuniversity.com) the online source for CAD training worldwide.

©2009 Kubotek Corporation. All rights reserved. Kubotek, KeyCreator and Kubotek Validation Tool are trademarks or registered trademarks of Kubotek Corporation in the USA and/or other countries. ACIS is a trademark of Spatial Technology Corporation. All other trademarks contained herein are the properties of their respective owners.